

INCIDENT COMMAND SYSTEM

WHAT IS IT?



John C. Kraemer, PA, F-ABMCI
 Director, Forensic Operations
 Iowa Office of the State Medical Examiner

DEFINITION

- "A management system designed to enable effective and efficient domestic incident management by integrating a combination of facilities, equipment, personnel, procedures, and communications operating within a common organizational structure." - FEMA 2018

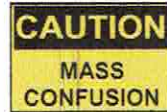
HISTORY

- ICS concept was created in 1968 at a meeting involving fire chiefs in Phoenix, Arizona.
- Adapted from management hierarchy of the U.S. Navy.
- ICS was first adapted and implemented in fighting wildfires in California and Arizona in the early 1970s.



WILDFIRE INCIDENT FAILURES IDENTIFIED

- Unclear chain of command and supervision
- Lack of accountability
- Poor communication, conflicting terminology
- Lack of an organized planning process (IAPs)
- Freelancing of responders



ICS - A NATIONAL MODEL



- ICS - New York at the first attack on the World Trade Center in 1993.
- March 1, 2004 - The U.S. Department of Homeland Security developed the National Incident Management System (**NIMS - per Homeland Security Presidential Directive-5**)
- Mandated federal, state, and local agencies work within a standardized approach to incident management.

WHEN IS ICS USED?

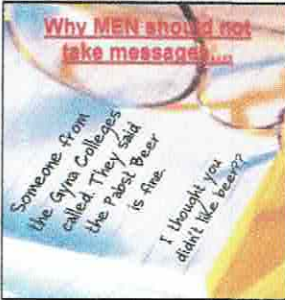


- Hazardous materials incidents (federally required)
- Planned events (parades, concerts, political visits, etc.)
- Response to natural disasters
- Single and multiple agency law enforcement events (active shooter, search and rescue, etc.)
- MCIs/mass fatality incidents




PRINCIPLES OF ICS

- ▶ Common Terminology
 - "Tanker"-Urban vs. Wildland Firefighting
- ▶ Modular Organization
 - Top-down structure that can expand or contract
- ▶ Unity of Command
 - Personnel report to one designated supervisor



PRINCIPLES OF ICS



- ▶ Unified Command Structure
 - All agencies responsible develop common set of incident objectives and strategies
- ▶ Manageable Span of Control
 - Personnel one supervisor can manage effectively (3-7, 5 optimal)
 - Reduces "freelancing"
- ▶ Designated Incident Facilities
 - Incident Command Posts (ICPs), Staging Areas

INCIDENT MANAGEMENT ENCOMPASSES:

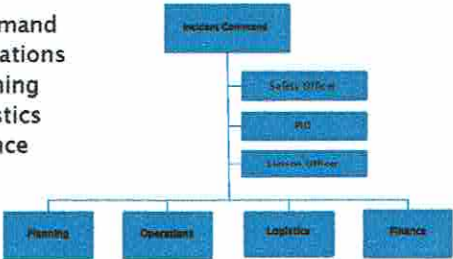
- Establishing command
- Ensuring safety of responders
- Assessing incident priorities
- Determining operational objectives
- Developing the Incident Action Plan (IAP)
- Maintaining manageable span of control
- Authorizing release of information to the media
- Keeping track of costs

INCIDENT COMMAND FUNCTIONS

- ▶ Establishes command
- ▶ Establishes the incident command post (ICP)
- ▶ Assesses incident priorities:
 1. Protecting life
 2. Incident stabilization
 3. Property conservation
- ▶ Maintains accountability for personnel
- ▶ Unified command structure

BASIC ICS STRUCTURE

- ▶ Command
- ▶ Operations
- ▶ Planning
- ▶ Logistics
- ▶ Finance



AS INCIDENT EXPANDS.....

- ▶ Command Staff Positions:
 - Safety Officer
 - Monitors safety conditions and ensures safety of personnel on scene
 - Public Information Officer (PIO)
 - Coordinates and responds to media inquires
 - Liaison Officer
 - On-scene contact for other agencies assigned to the Incident

PLANNING SECTION

- ▶ Collection, evaluation, and dissemination of information regarding an incident and status of resources.
- ▶ Creation of the Incident Action Plan (IAP)
 - Defines response activities and resource utilization for a specified time.



OPERATIONS SECTION

- ▶ Carries out the response activities as described in the Incident Action Plan (IAP)
 - Directs and coordinates all operations
 - Develops response goals and objectives with IC
 - Implements the IAP
 - Requests or releases resources, as needed



STRATEGY vs. TACTICS



LOGISTICS SECTION

- ▶ Provides facilities, services, materials, and personnel for a given incident.
 - Geared more towards supporting needs of incident responders

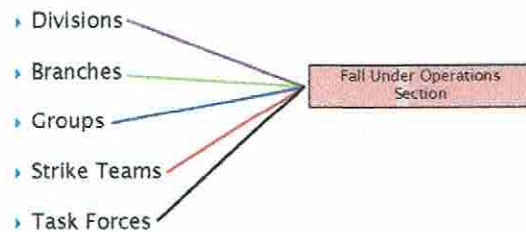


FINANCE SECTION

- ▶ Tracks incident costs and performs reimbursement accounting.

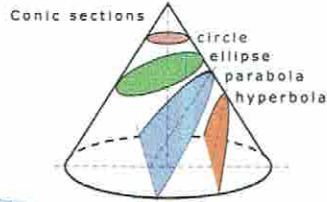


ADDITIONAL ICS AREAS



SECTIONS

- Organizational levels that have functional responsibility for primary segments of incident management.



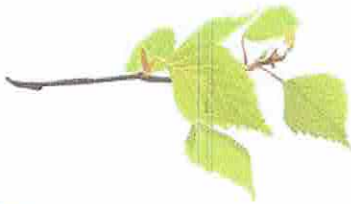
DIVISIONS

- Divides incident into geographical areas of responsibility.



BRANCHES

- Organizational level having functional, geographic, and jurisdictional responsibility in an incident.



GROUPS

- Organizational level for functional assignments/operations.



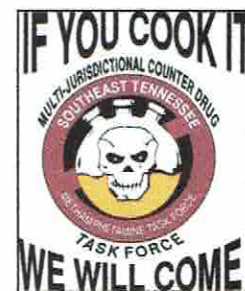
STRIKE TEAMS

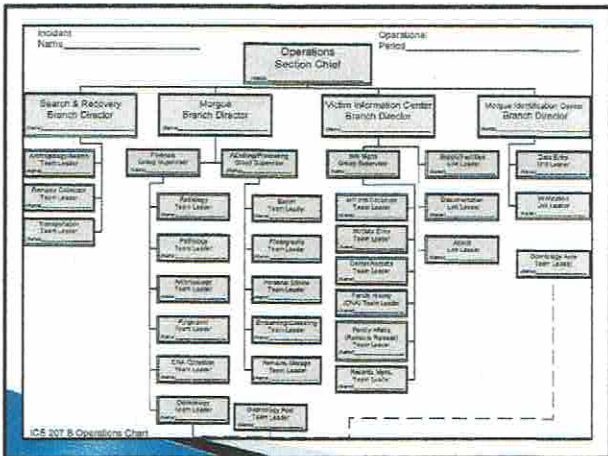
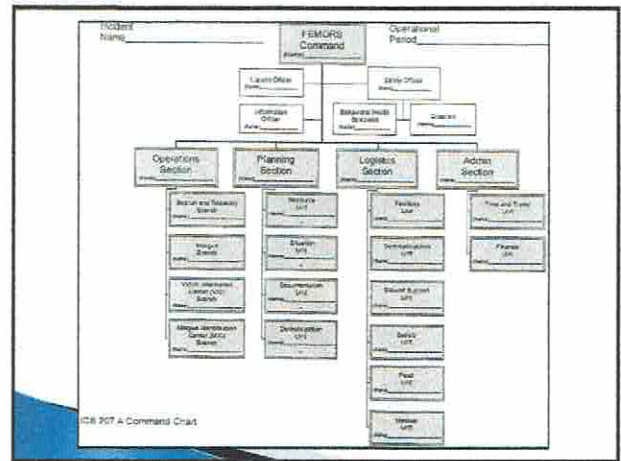
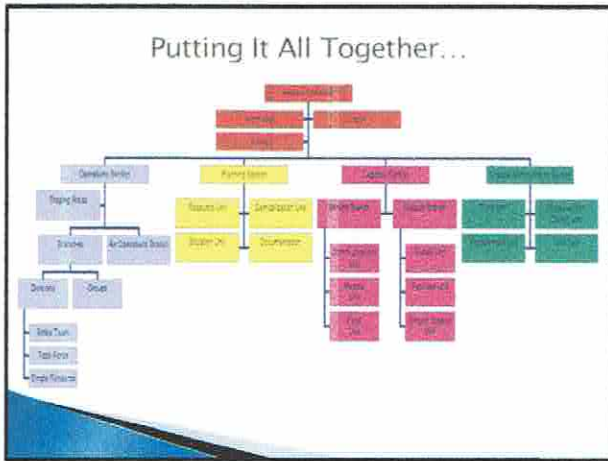
- A group of resources of the same size and type.



TASK FORCE

- Single resources gathered for a single need.





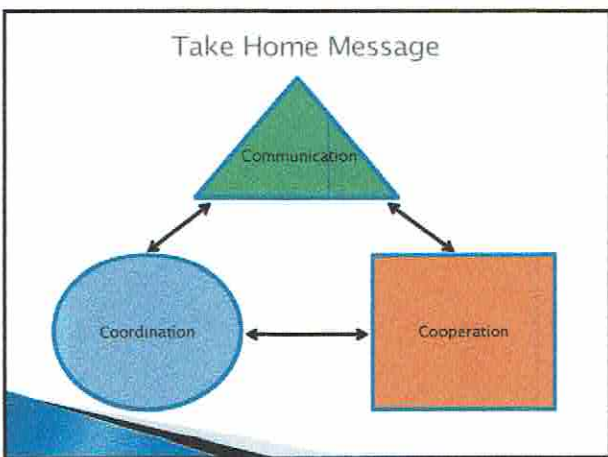
ICS Humor

Hitler As Planning Section Chief

- ICS 204 Form: Work Assignment List
- ICS 205 Form: Incident Radio Communications Plan
- ICS 207 Form: Incident Command Chart
- ICS 215 Form: Operational Planning Worksheet
- ICS 230 Form: Daily Meeting Schedule

DeMob Plan: Plan for demobilization of resources
 DRCs: Disaster Recovery Center

<https://www.youtube.com/watch?v=oPW9YXN-ECM>



ICS FINAL EXAM

ICS EXAM

- 1.) The Incident Command System (ICS) is a tool for:
- A. Command, control, and coordination at an incident.
 - B. Interagency responses only.
 - C. Multi-jurisdictional responses only.
 - D. Responses involving first-response personnel only.

ICS EXAM

- 2.) ICS can be used to manage all types of incidents.
- A. True
 - B. False

ICS EXAM

- 3.) Federal law requires that ICS be used for all natural disasters.
- A. True
 - B. False

ICS EXAM

- 4.) The ICS *General Staff* includes:
- A. Branch, Division, Group, and Unit managers.
 - B. All managers of operational resources.
 - C. Planning, Operations, Logistics, and Finance Section Chiefs.
 - D. The Incident Commander and the Information Safety, and Liaison Officers.

ICS EXAM

- 5.) All incidents, regardless of size, will have an Incident Commander.
- A. True
 - B. False

ICS EXAM

- 6.) In an ICS environment, the optimum span of control is:
- A. Three
 - B. Seven
 - C. Five
 - D. Ten

ICS EXAM

- 7.) Which section is responsible for providing incident facilities?
- A. Planning
 - B. Operations
 - C. Logistics
 - D. Finance

ICS EXAM

- 8.) Which section is responsible for documenting the status of resources, incident response, and developing the Incident Action Plan (IAP)?
- A. Planning
 - B. Operations
 - C. Logistics
 - D. Finance

ICS EXAM

- 9.) The Incident Commander is responsible for all of the following **EXCEPT**:
- A. Protecting life and property
 - B. Controlling resources assigned to the incident
 - C. Maintaining accountability
 - D. Coordinating a community-wide response

ICS EXAM

- 10.) In a mass fatality event, who is the *primary* Incident Commander with regards to coordinating care for the deceased?
- A. Fire Chief
 - B. Police Chief
 - C. County Emergency Management Coordinator
 - D. County Medical Examiner

Thank You